

Bring VALUE to your research

Human

SEBOCYTES, MELANOCYTES and KERATINOCYTES

derived with the unique technology of **iPSC**

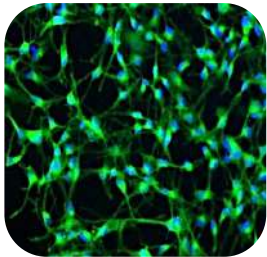
Choose the ethnicity:

CAUCASIAN, ASIAN, AFRICAN

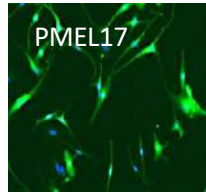
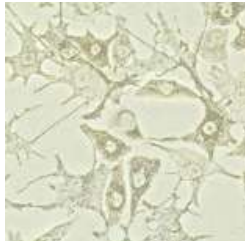


- Unlimited quantities (No batch-to-batch variation)
- Highly cost-effective compared to primary cells
- Pathological cells creation on demand
- Amenable to skin reconstruction technology, including 3D
- For more information and online orders

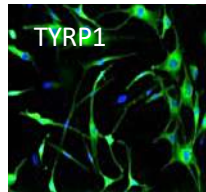
MELANOCYTES



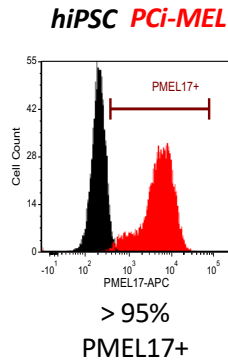
PCi-MEL



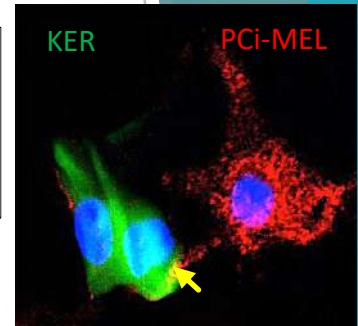
PMEL17



TYRP1



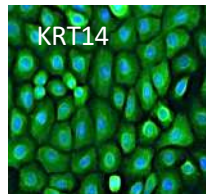
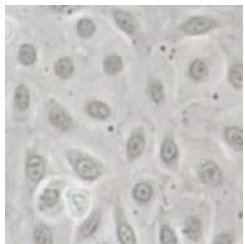
Melanosome transfer to keratinocytes



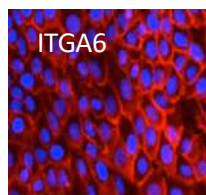
KERATINOCYTES



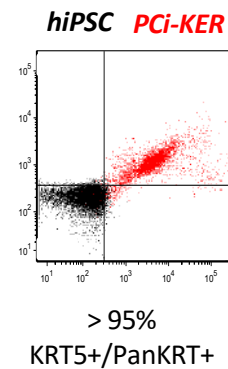
PCi-KER



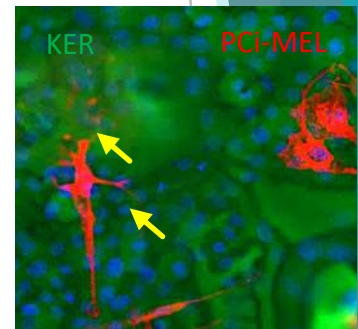
KRT14



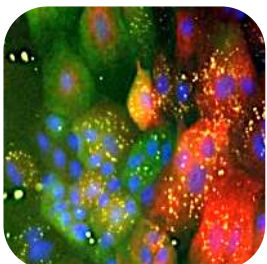
ITGA6



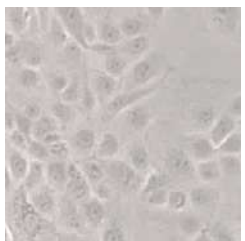
Melanosome transfer from melanocytes



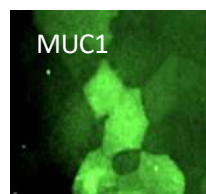
SEBOCYTES



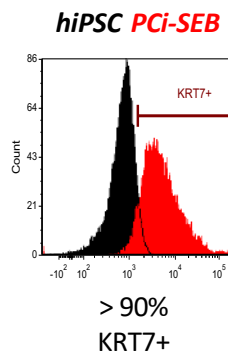
PCi-SEB



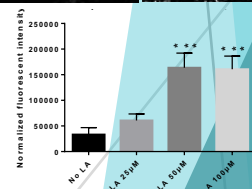
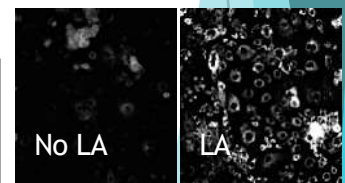
KRT7



MUC1



Response to Linoleic Acid



- For more information and online orders